



Services

- Transportation Data Collection and Monitoring Service
- Transportation Demand Forecast Modeling with Emme, Cube, TransCAD
- Traffic Operational Modeling with Vistro, Synchro, HCS and FREEVAL
- Big Data Analysis of StreetLight and Replica Data with MS Power BI software
- Transportation Professional Services and Reports

Qualifications

- Institute of Transportation Engineers (ITE)
- Transportation Research Board (TRB)
- ITS California
- Nvidia/Oracle Inception Program
- NBA Golden Gate Warriors and United Corporate Ready Program

Certifications License

- SAM ID (#FXN8LTKF9AM9)
- CUCP DBE (#38506)
- California DGS SB (#1523444)
- Alameda County SLEB ||Alameda CTC LSB
- City of Pleasanton License (#104606)

W & S Solutions

Since 2009, W & S Solutions (W&S) has been providing its services for data collections, traffic monitoring, transportation modeling, transportation planning, traffic operations, and traffic study projects.

Industry Codes

- **Duns Code:** 831851121
- **Cage Code:** 5PWZ6
- **Primary NAICS Codes:** 518210 Data process; 541330 Traffic Engineering Service; 541614 Transportation Management Consulting Services; 541620 Environmental Consulting Services; 541690 Security consulting services; 541710 Research and Development in the Physical, Engineering, and Life Sciences; 561621 Security system monitoring services; 519190 All Other Information Services; 541921 Video; 423410 Video Surveillance; 812922 Parking Lots
- **Work Codes:** C8610 Speed Monitoring Station; C8700 Consultant, Non-Engineering; C8703 Traffic Engineer; C8710 Engineering; I7370 Computer & Data Processing Services; I7371 Computer Programming; I7373 Integrated Systems & CAD/CAM Systems; J9510 Environmental Quality; J9530 Housing & Urban Development
- **UNSPSC Codes:** 46171621 Video Monitoring; 46171640 Surveillance & detection equipment - Automatic traffic monitoring system; 46161500 Public safety and control - Traffic control; 81102200 Transportation engineering; 81102201 Transportation

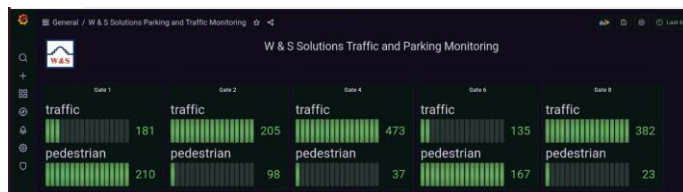
Key Clients

- Asian Development Bank
- USTDA
- California Department of Transportation
- MTC
- Alameda CTC
- City of South San Francisco
- San Francisco County Transportation Authority
- Kittelson and Associates
- DKS
- Stantec
- Fehr & Peers
- Crane Transportation Group
- WSP
- Cambridge Systematics
- Steer Group
- Harris & Associates
- California Highspeed Rail Authority
- Rajappan & Meyer



Contact Us

Jia Hao Wu
 6701 Koll Center Parkway, Suite 250
 Pleasanton, CA, USA 94566
 925-398-3419 (direct-phone)
 sales@wssolutions.ca (email)
 www.wssolutions.us (web)



Featured Services

1. MTC Model Conversion, 2021
2. CCTA/Alameda CTC Model Development, 2021
3. Revenue and State-wide Modeling Network Development for the California High-Speed Rail Authority, 2020
4. Traffic Operation Analysis and Report for Caltrans District 3, 2018
5. Feasibility Study of the ITS/Adaptive Traffic Control for the City of Guangzhou Panyu District Supported by USTDA (US Trade and Development Agency)
6. Overall Evaluation of I-580 and I-680 Express Lane Project Corridor: After Study for Alameda CTC
7. Asian Development Bank Funded Project in Asian Countries
8. Climate Change Adaptation Guideline for Caltrans
9. City General Plan and Model Update for the City of Eureka
10. Environmental Impact Study and Demand Forecasting for South San Francisco

W&S Difference

- Big Data Services, AI Based and Modeling Process Tools
- ITS Studies and ATMS Implementation with Centrac, Autoscope, ACS/3
- Corridor Level HCS and Synchro Models with Turn Counts from Demand Forecasting Modeling Systems
- Transportation System Planning Models in Cube/TP+, TransCAD and Emme/EMME/2 at Both Local and Regional Levels
- Modeling to Support Strategies for the Land Use Allocations
- Traffic Modeling of Meso- and Micro-Simulation Models with Simtraffic,
- Aimsun and Dynameq
- International Consulting Services using English and Chinese

Featured Data Services

1. Cloud and Data Hosting Services
2. Transportation Patterns Analysis with Big Data Sources for California High-Speed Rail Project
3. Transit Travel Pattern Analysis with Replica Data for Caltrans Corridor Safety and Environment Projects
4. Traffic Data Monitoring System for the Shanghai Exhibition Center
5. AI Video Process Technologies
6. Travel Time, Speed and Traffic Operation Capturing Using Video Recording with a GIS/GPS Component
7. Traffic Counts for MTC PASS Program Using Traffic Counts
8. Collision Data from Caltrans' SWITRS Data Base for Alameda CTC
9. California Highway PeMS Data for Model Developments and Traffic Studies